

PHOENIXVILLE AREA SCHOOLS



EDUCATION

CLIENT PROFILE:

Schuylkill Elementary located in Phoenixville, PA had an upper and lower Elementary School. The Phoenixville Area School District wanted to consolidate the two to better utilize the site. They had to choose one to stay open while the other would be rebuilt big enough for both.

CLIENT CHALLENGE:

Both schools by themselves were filled to capacity. The district considered busing students to various elementary schools around the district, but that would require multiple locations and those locations were almost at full capacity. The site only has 20 acres and already had two elementary buildings so available space was limited. The timeline was difficult because Phoenixville couldn't start the knock down until school ended in June 2003 and would start again in late August.

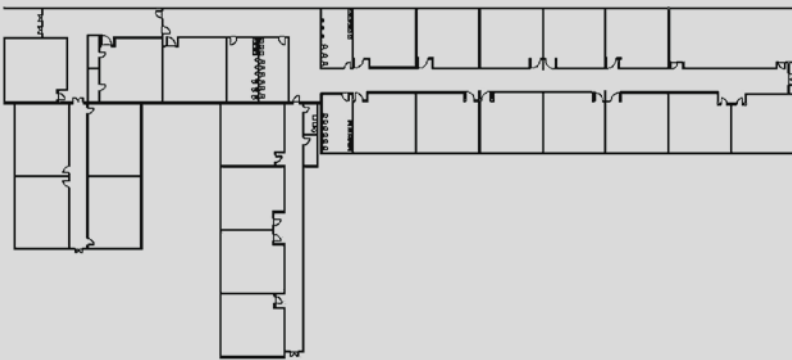


THE MOBILEASE SOLUTION:

Phoenixville was already a Mobilease customer so they consulted us and together we developed a 27,000 sq. ft. modular building to house 25 classrooms, 1,500 sq. ft. office space, 1,500 sq. ft. multipurpose room, multiple bathroom facilities— all under one roof connecting the modular space to the upper elementary school for the duration of the construction project.

PROJECT SCHEDULE

Contract Awarded	Drawing Review/ Approval	Permit Issued	Site Preparation	Delivery & Installation	Completion Date	Total Days
4.15.03	5.13.03	5.20.03	6.16.03	6.30.03	8.20.03	128



"It was a pleasure working with Mobilease and I was very satisfied with your ability to provide a full turn key project for a 27,000 square foot building and meet our tight schedule."

—Ronald Miller
Phoenixville Area School District

MOBILEASE
MODULAR SPACE INC.