

# MOBILEASE MODULAR SPACE INC.

201 Route 130 Pedricktown, NJ 08067

[www.mobileasemodular.com](http://www.mobileasemodular.com)

P: 888-649-6007

F: 856-686-9240

**MODEL  
NUMBER**

MED-010

**BUILDING  
USE**

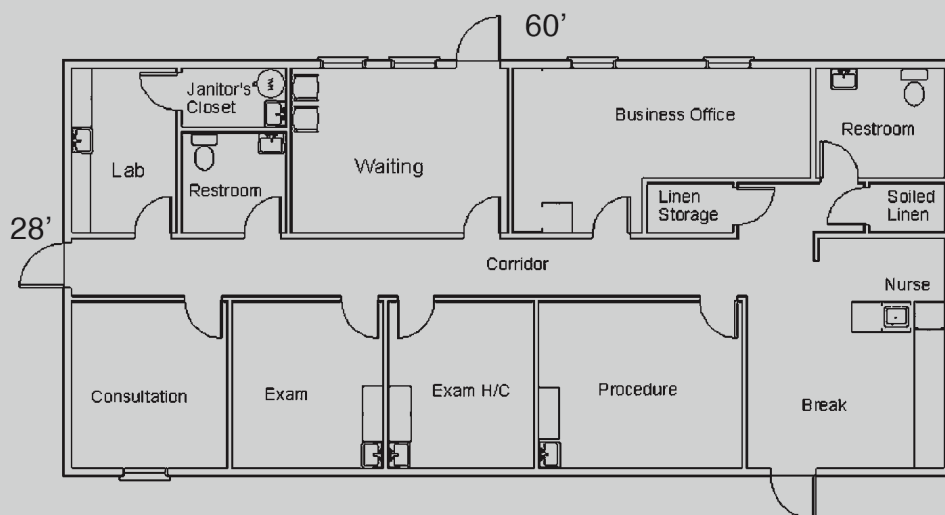
HEALTHCARE

**BUILDING  
SIZE**

28'X60'

**SQUARE  
FOOTAGE**

1,680 sq.ft.



## SPECS:

**Exterior Siding:** 7/16 Smart Panel

**Interior Walls:** Vinyl Covered Gypsum

**Ceiling:** Suspended

**Floor:** Carpet or Tile

**HVAC:** Bard wall hung with Electric Heat Strips

**Plumbing:** (2) Restrooms and multiple sinks

**Electric:** 120/240V, single phase

**Windows:** (5) 24x60 vertical slider/(1) 36"x36" sliding receptionist window

This available modular building is subject to availability. Listed dimensions may vary and are based on nominal sizes. Please contact Mobilease Modular Space, Inc. for pricing and to receive a formal proposal with complete specifications, drawings, and for additional delivery and installation details. The floor plan and specifications can be modified if necessary.

[www.mobileasemodular.com](http://www.mobileasemodular.com)